

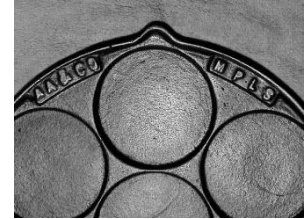
Plett Pans

Alfred Andresen & Co (circa 1898 to 1912)

(JH indicates John Haussler variation number from *Griswold Muffin Pans*)

Tom Neitzel, December 30, 2013, Copyright 2006, 2008, 2013

1. **Variation 1** – Solid bottom, long high arc handle, name on top.



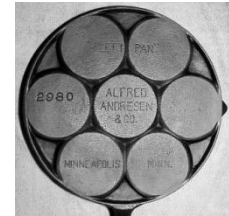
AA & CO. MPLS

2. **Variation 2** – Shallow relief on back, long high arc handle, name lettered across several cups on bottom (JH1).



**“PLETT PAN”
ALFRED
ANDRESEN
& CO.
MINNEAPOLIS MINN.**

3. **Variation 3** – Same as variation 2 with addition of 2980 number (JH2).



**“PLETT PAN”
2980 ALFRED
ANDRESEN
& CO.
MINNEAPOLIS MINN.**

4. **Variation 4** – Same as variation 3 with name on the center cup bottom (JH 3).



**ALFRED ANDRESEN CO.
PLETT PAN
MINNEAPOLIS
MINN.
2980**

5. **Variation 5** – Ring around name on the center cup bottom, short pointed handle (JH 4).



**ALFRED ANDRESEN CO.
PLETT PAN
MINNEAPOLIS
MINN.
2980**

Western Importing Co. (circa 1913 to 1930's)

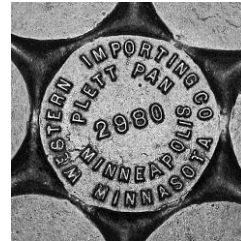
1. **Variation 1** – Identical to Alfred Andresen variation 5 with ring around name on the center cup bottom, short pointed handle.

WESTERN IMPORTING CO.
PLETT PAN
MINNEAPOLIS
MINN.
2980



2. **Variation 2** – Name canted and raised on center cup bottom without ring, short pointed handle. Minnesota misspelled as Minnasota.

WESTERN IMPORTING CO
PLETT PAN
2980
MINNEAPOLIS
MINNASOTA



3. **Variation 3** – Name centered and raised on center cup bottom without ring, short pointed handle. Minnesota spelled correctly.

WESTERN IMPORTING CO.
PLETT PAN
2980
MINNEAPOLIS
MINNESOTA



4. **Variation 4** – Name centered and raised on center cup bottom without ring, short pointed handle. Minnesota spelled correctly. No gaps between cups on bottom. Very heavy pan.

WESTERN IMPORTING CO.
PLETT PAN
2980
MINNEAPOLIS
MINNESOTA



Griswold Manufacturing (1918 – 1999)

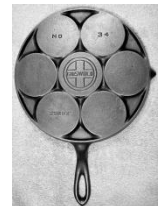
BN 1: Pointed early handle with large Griswold slant logo in double circle pushed to the top of the center cup with “2980 X” below the logo. (JH 1)



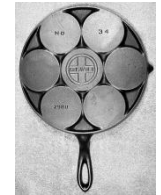
BN 2: Same as BN1 except it has the “No 34” across the top two cups. This is the first known use of the number 34 on a plett pan. It was never used on any of the pans made by Griswold for others. It appears the number was strictly Griswold’s number for its own pans. (JH 2)



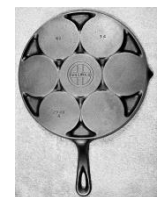
BN 3: Large Griswold block logo on center cup with “No 34” on top two cups and “2980X” on the lower left cup.



BN 4: Same as BN 3 but without the “X” after the “2980”. (JH 3)



BN 5: This is the beginning of the later style rounded handle. This pan has the longer rounded handle. It has the small Griswold logo with “NO 34” on the top two cups and “2980 A” on the lower left cup in smaller letters and numbers. The “A” is centered under the “2980”. We think this may have been the last plett pan variation to be made at the Erie plant as it was acquired with its cardboard shipping box, which read: “GRISWOLD MFG. CO., ERIE, PENNA., U.S.A.” (JH 4)



BN 6: The same “NO 34” and small Griswold logo as BN 5 without numbers or markings on the lower left cup. The pan does have an “A” on the back of the handle. This is the first variation without the 2980 number. This is the beginning of the shorter rounded handle style and most importantly, this pan has a dimple or recess on the back of the handle where it joins the pan. This dimple has not been seen on any of the previous Griswold pans made for themselves or others. We were able to confirm this pan was in fact made at the Wagner factory as it came with its shipping box which read, “Griswold Mfg. Co. Sidney Ohio” with the date 1959. This may have been the first Griswold plett pan design to be made in the Wagner foundry. (JH 5)



BN 7: This pan is the second of the dimple handled pans and contains no markings other than A on the back of the handle like BN 6.



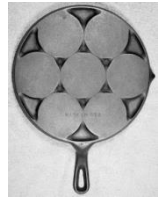
BN 8: This pan is the third of the dimple handled pans and contains no markings other than "MADE IN USA" across the lower two cups. The casting and grinding are rough.



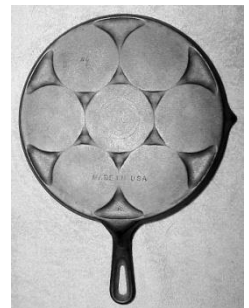
BN 9: This pan has the "dimple" and markings "MADE IN USA" found on BN 8. It is different in that it has an "A" in the lower recess on the bottom between the cups just above the handle.



BN 10: The pan is similar to BN 9 but without the dimple at the bottom of the handle junction. The only markings are "MADE IN USA" across the bottom two cups. There may be a very faint "NO 34" and small Griswold logo ghost mark on some of the pans. Note the "sprue" mark where the handle attached on the bottom of the pan.



BN 11: This pan has the same "MADE IN USA" marking as the BN 9. There is an "A" on the underside of the pan in the recess between the two cups nearest the handle. There may be ghost marks of the small Griswold logo on the center cup and the "NO 34" on the top two cups. The "sprue" mark is present on the underside where the handle attaches to the pan. The author's pan had a shipping box showing it came from the Wagner factory dated 1961.



Note that each of the illustrated shipping boxes has the NO. 34, even though it may be absent on later pan variations.

BN 12: This pan is similar in dimensions to BN 11 but has no markings of any kind. There is no dimple or sprue mark on the bottom where the handle attaches. We think this may have been the last variation of the plett pan to be produced at the Wagner foundry before it closed.

